



Customer: Premier US Hemp

Address: 1224 S. Peninsula Dr #212
Daytona Beach, FL 32118

Sample ID: Premier US Hemp - AV357 Coconut Massage Oil 0%

Matrix: Topical

Labnumber: 21F0070-01 Total mass or volume per unit (g or mL): 57

Density (g/mL): .947

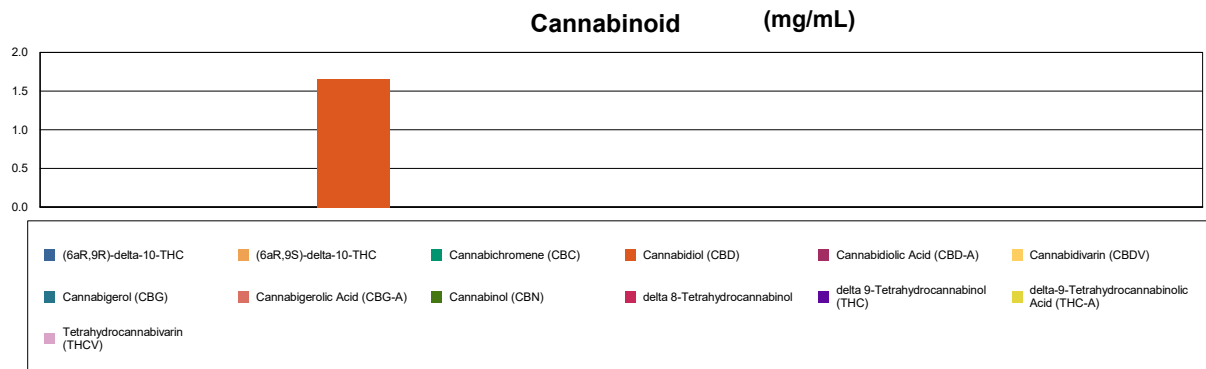
Cannabinoid Profile

Test Conditions: 23°C
Extraction Technician: SH
Analytical Chemist: SH

Extraction Date(s)	Analysis Date(s)
6/7/2021	6/8/2021

Cannabinoids (HPLC)	Results			
	LOD (mg/mL)	%	mg/mL	mg/Bottle
Cannabidivarin (CBDV)	<0.090			
Cannabidiolic Acid (CBD-A)	<0.090			
Cannabigerolic Acid (CBG-A)	<0.090			
Cannabigerol (CBG)	<0.090			
Cannabidiol (CBD)		0.17	1.66	94.5
Tetrahydrocannabivarin (THCV)	<0.090			
Cannabinol (CBN)	<0.090			
Cannabichromene (CBC)	<0.090			
delta 9-Tetrahydrocannabinol (THC)	<0.090			
delta-9-Tetrahydrocannabinolic Acid (THC-A)	<0.090			
delta 8-Tetrahydrocannabinol	<0.090			
(6aR,9S)-delta-10-THC	<0.090			
(6aR,9R)-delta-10-THC	<0.090			
Cannabinoids Total		%	mg/mL	
Max Active THC (delta-9-tetrahydrocannabinol)		0.00	0.00	
Max Active CBD		0.17	1.66	
T.Active Cannabinoids		0.17	1.66	
Total Cannabinoids		0.17	1.66	

Following USDA guidelines on uncertainty, Altitude Consulting's uncertainty is calculated to be +/- 2% for all cannabinoids using a coverage factor of 2 (95% confidence interval). Measurement uncertainty has not been factored into reported values.
Blank results indicate the compound was below the limit of detection.



Gary Brook - Laboratory Director - 6/8/2021

Reporting Limits will vary based on sample extraction weight used for the analysis.

The results of this report are based solely on the sample submitted and cannot be reproduced. Decision Rule: Measurement uncertainty is not accounted for in the reported values.

Results are based solely on calculated numbers. Altitude Consulting makes no Statements of conformity. **Pesticide, metal, and microbial analyses are subcontracted to ISO 17025 laboratories.**



Customer: Premier US Hemp
Address: 1224 S. Peninsula Dr #212
 Daytona Beach, FL 32118
Sample ID: Premier US Hemp Tincture 2000mg 0% THC
Matrix: Tincture
Labnumber: 21F0070-02 Total mass or volume per unit (g or mL): 30 Density (g/mL): .9532

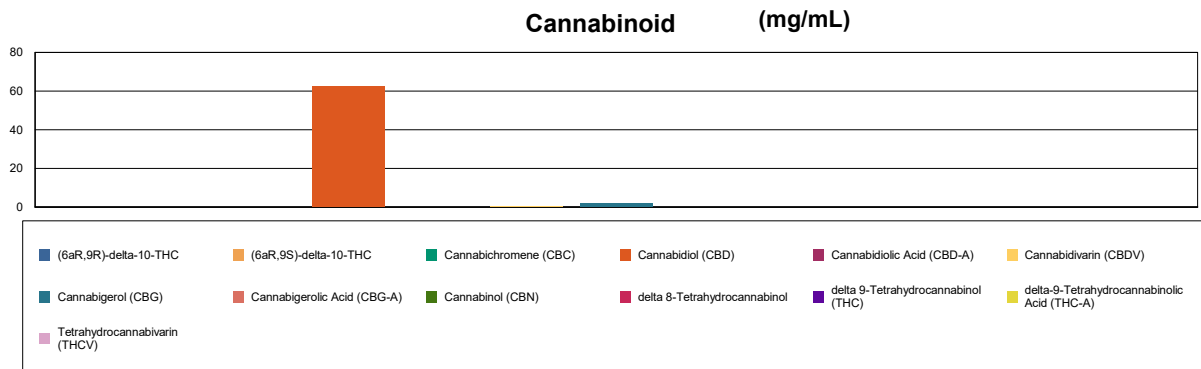
Cannabinoid Profile

Test Conditions: 23°C
Extraction Technician: SH
Analytical Chemist: SH

Extraction Date(s)	Analysis Date(s)
6/7/2021	6/8/2021

Cannabinoids (HPLC)		Results		
	LOD (mg/mL)	%	mg/mL	mg/Bottle
Cannabidiol (CBD)		6.23	62.3	1870
Cannabidiol (CBD)		6.23	62.3	1870
Tetrahydrocannabivarin (THCV)	<0.20			
Cannabinol (CBN)	<0.20			
Cannabichromene (CBC)	<0.20			
delta 9-Tetrahydrocannabinol (THC)	<0.20			
delta-9-Tetrahydrocannabinolic Acid (THC-A)	<0.20			
delta 8-Tetrahydrocannabinol	<0.20			
(6aR,9S)-delta-10-THC	<0.20			
(6aR,9R)-delta-10-THC	<0.20			
Cannabinoids Total		%	mg/mL	
Max Active THC (delta-9-tetrahydrocannabinol)		0.00	0.00	
Max Active CBD		6.23	62.30	
T.Active Cannabinoids		6.43	64.30	
Total Cannabinoids		6.46	64.60	

Following USDA guidelines on uncertainty, Altitude Consulting's uncertainty is calculated to be +/- 2% for all cannabinoids using a coverage factor of 2 (95% confidence interval). Measurement uncertainty has not been factored into reported values.
 Blank results indicate the compound was below the limit of detection.




Gary Brook - Laboratory Director - 6/8/2021

Reporting Limits will vary based on sample extraction weight used for the analysis.

The results of this report are based solely on the sample submitted and cannot be reproduced. Decision Rule: Measurement uncertainty is not accounted for in the reported values. Results are based solely on calculated numbers. Altitude Consulting makes no Statements of conformity. **Pesticide, metal, and microbial analyses are subcontracted to ISO 17025 laboratories.**



Customer: Premier US Hemp
Address: 1224 S. Peninsula Dr #212
Daytona Beach, FL 32118
Sample ID: Premier US Hemp Tincture 2000mg <0.3%
Matrix: Tincture
Labnumber: 21F0070-03 Total mass or volume per unit (g or mL): 30 Density (g/mL): .9532

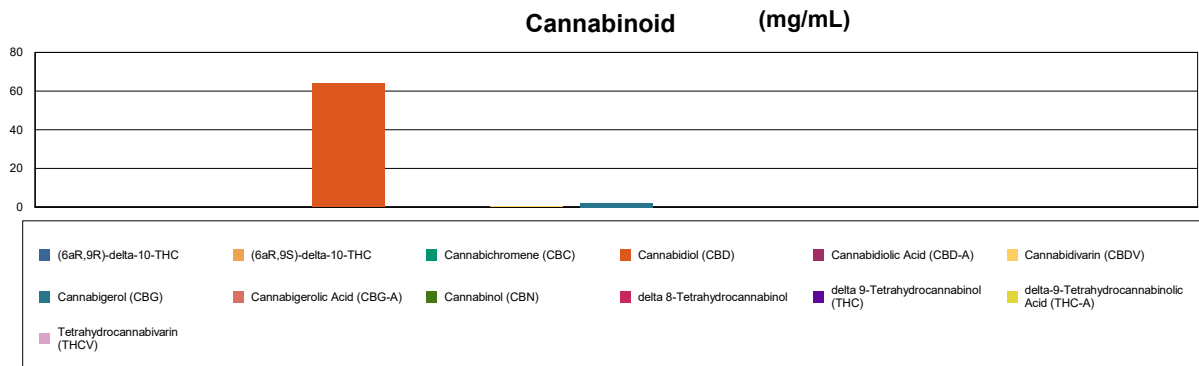
Cannabinoid Profile

Test Conditions: 23°C
Extraction Technician: SH
Analytical Chemist: SH

Extraction Date(s)	Analysis Date(s)
6/7/2021	6/8/2021

Cannabinoids (HPLC)		Results		
	LOD (mg/mL)	%	mg/mL	mg/Bottle
Cannabidiol (CBD)		6.40	64.0	1920
Cannabigerol (CBG)		0.22	2.17	65.1
Cannabidiol (CBD)		6.40	64.0	1920
Tetrahydrocannabivarin (THCV)	<0.20			
Cannabinol (CBN)	<0.20			
Cannabichromene (CBC)	<0.20			
delta 9-Tetrahydrocannabinol (THC)	<0.20			
delta-9-Tetrahydrocannabinolic Acid (THC-A)	<0.20			
delta 8-Tetrahydrocannabinol	<0.20			
(6aR,9S)-delta-10-THC	<0.20			
(6aR,9R)-delta-10-THC	<0.20			
Cannabinoids Total		%	mg/mL	
Max Active THC (delta-9-tetrahydrocannabinol)		0.00	0.00	
Max Active CBD		6.40	64.00	
T.Active Cannabinoids		6.62	66.20	
Total Cannabinoids		6.65	66.50	

Following USDA guidelines on uncertainty, Altitude Consulting's uncertainty is calculated to be +/- 2% for all cannabinoids using a coverage factor of 2 (95% confidence interval). Measurement uncertainty has not been factored into reported values.
Blank results indicate the compound was below the limit of detection.




Gary Brook - Laboratory Director - 6/8/2021

Reporting Limits will vary based on sample extraction weight used for the analysis.

The results of this report are based solely on the sample submitted and cannot be reproduced. Decision Rule: Measurement uncertainty is not accounted for in the reported values. Results are based solely on calculated numbers. Altitude Consulting makes no Statements of conformity. **Pesticide, metal, and microbial analyses are subcontracted to ISO 17025 laboratories.**



Customer: Premier US Hemp
Address: 1224 S. Peninsula Dr #212
Daytona Beach, FL 32118
Sample ID: Premier US Hemp Tincture 1000mg <0.3%
Matrix: Tincture
Labnumber: 21F0070-04 **Total mass or volume per unit (g or mL):** 30 **Density (g/mL):** .9532

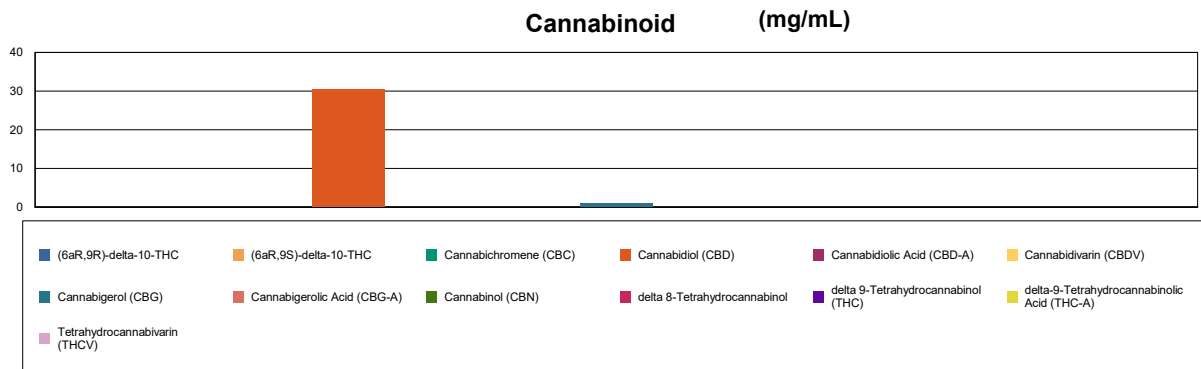
Cannabinoid Profile

Test Conditions: 23°C
Extraction Technician: SH
Analytical Chemist: SH

Extraction Date(s)	Analysis Date(s)
6/7/2021	6/8/2021

Cannabinoids (HPLC)		Results		
	LOD (mg/mL)	%	mg/mL	mg/Bottle
Cannabidivarin (CBDV)	<0.20			
Cannabidiolic Acid (CBD-A)	<0.20			
Cannabigerolic Acid (CBG-A)	<0.20			
Cannabigerol (CBG)		0.10	0.972	29.2
Cannabidiol (CBD)		3.05	30.5	916
Tetrahydrocannabivarin (THCV)	<0.20			
Cannabinol (CBN)	<0.20			
Cannabichromene (CBC)	<0.20			
delta 9-Tetrahydrocannabinol (THC)	<0.20			
delta-9-Tetrahydrocannabinolic Acid (THC-A)	<0.20			
delta 8-Tetrahydrocannabinol	<0.20			
(6aR,9S)-delta-10-THC	<0.20			
(6aR,9R)-delta-10-THC	<0.20			
Cannabinoids Total		%	mg/mL	
Max Active THC (delta-9-tetrahydrocannabinol)		0.00	0.00	
Max Active CBD		3.05	30.50	
T.Active Cannabinoids		3.15	31.50	
Total Cannabinoids		3.15	31.50	

Following USDA guidelines on uncertainty, Altitude Consulting's uncertainty is calculated to be +/- 2% for all cannabinoids using a coverage factor of 2 (95% confidence interval). Measurement uncertainty has not been factored into reported values.
Blank results indicate the compound was below the limit of detection.




Gary Brook - Laboratory Director - 6/8/2021

Reporting Limits will vary based on sample extraction weight used for the analysis.

The results of this report are based solely on the sample submitted and cannot be reproduced. Decision Rule: Measurement uncertainty is not accounted for in the reported values. Results are based solely on calculated numbers. Altitude Consulting makes no Statements of conformity. **Pesticide, metal, and microbial analyses are subcontracted to ISO 17025 laboratories.**