



Customer: Premier Naturals
Address: PO Box 2647
 Daytona Beach, FL 32115
Sample ID: PUSH Moil .3% Hemp Aroma Lot#AV568
Matrix: Topical
Labnumber: 21A0534-03



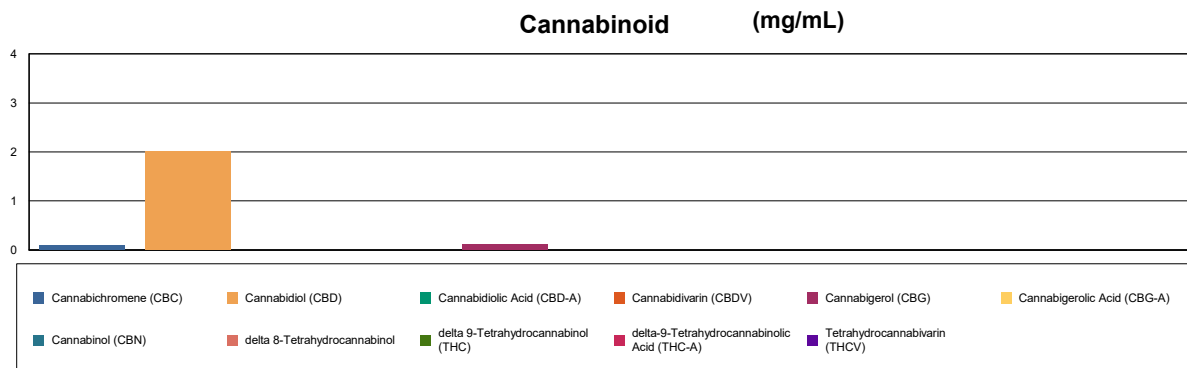
Cannabinoid Profile

Test Conditions: 20°C
Extraction Technician: SH
Analytical Chemist: SH

Extraction Date(s)	Analysis Date(s)
1/25/2021	1/26/2021

Cannabinoids (HPLC)		Results	
	LOD (mg/mL)	%	mg/mL
Cannabidiol (CBD)	<0.080	0.20	2.01
Cannabidiolol Acid (CBD-A)	<0.080		
Cannabigerolol Acid (CBG-A)	<0.080		
Cannabigerol (CBG)		0.01	0.108
Tetrahydrocannabivarin (THCV)	<0.080		
Cannabinol (CBN)	<0.080		
delta 9-Tetrahydrocannabinol (THC)	<0.080		
delta 8-Tetrahydrocannabinol	<0.080		
Cannabichromene (CBC)		0.009	0.094
delta-9-Tetrahydrocannabinolic Acid (THC-A)	<0.080		
Cannabinoids Total		%	mg/mL
Max Active THC		0.00	0.00
Max Active CBD		0.20	2.01
T.Active Cannabinoids		0.22	2.21
Total Cannabinoids		0.22	2.21

Following USDA guidelines on uncertainty, Altitude Consulting's uncertainty is calculated to be +/- 2% for all cannabinoids using a coverage factor of 2 (95% confidence interval). Measurement uncertainty has not been factored into reported values.



Gary Brook - Laboratory Director - 1/26/2021

Reporting Limits will vary based on sample extraction weight used for the analysis.

Altitude Consulting, LLC utilizes NIST traceable Reference Standards and Certified Reference Material to calibrate analytical instruments along with proven analytical methods. The methods are applied in the most ethical manner following good laboratory practice guidelines. The results of this report are based solely on the sample submitted and cannot be reproduced. Decision Rule: Measurement uncertainty is not accounted for in the reported values. Results are based solely on calculated numbers. Altitude Consulting makes no Statements of conformity.