

Customer: Premier US Hemp
Address: 1224 S. Peninsula Dr #212
Daytona Beach, FL 32118
Sample ID: Premier CinnaHOT 0% Tincture
Matrix: Tincture
Labnumber: 21D0010-01



Density (g/mL): .9634

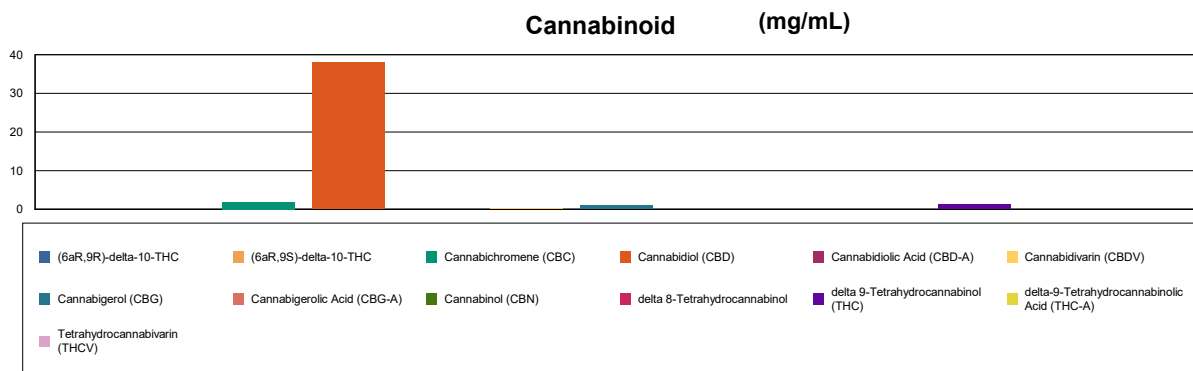
Cannabinoid Profile

Test Conditions: 18°C
Extraction Technician: SH
Analytical Chemist: CB

Extraction Date(s)	Analysis Date(s)
4/1/2021	4/1/2021

Cannabinoids (HPLC)		Results	
	LOD (mg/mL)	%	mg/mL
Cannabidiol (CBD)		3.80	38.0
Cannabidiolol (CBDV)		0.03	0.267
Cannabidiolic Acid (CBD-A)	<0.20		
Cannabigerolic Acid (CBG-A)	<0.20		
Cannabigerol (CBG)		0.10	1.02
Tetrahydrocannabinol (THC)		0.13	1.29
Tetrahydrocannabinolol (THCV)			
Cannabichromene (CBC)		0.19	1.94
delta 9-Tetrahydrocannabinol (THC)		0.13	1.29
delta-9-Tetrahydrocannabinolic Acid (THC-A)	<0.20		
delta 8-Tetrahydrocannabinol	<0.20		
(6aR,9S)-delta-10-THC	<0.20		
(6aR,9R)-delta-10-THC	<0.20		
Cannabinoids Total		%	mg/mL
Max Active THC (delta-9-tetrahydrocannabinol)		0.13	1.29
Max Active CBD		3.80	38.00
T.Active Cannabinoids		4.23	42.30
Total Cannabinoids		4.25	42.50

Following USDA guidelines on uncertainty, Altitude Consulting's uncertainty is calculated to be +/- 2% for all cannabinoids using a coverage factor of 2 (95% confidence interval). Measurement uncertainty has not been factored into reported values.
Blank results indicate the compound was below the limit of detection.



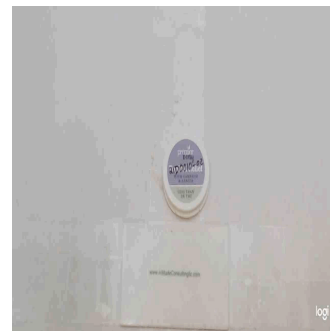
Gary Brook - Laboratory Director - 4/2/2021

Reporting Limits will vary based on sample extraction weight used for the analysis.

The results of this report are based solely on the sample submitted and cannot be reproduced. Decision Rule: Measurement uncertainty is not accounted for in the reported values.

Results are based solely on calculated numbers. Altitude Consulting makes no Statements of conformity. **Pesticide, metal, and microbial analyses are subcontracted to ISO 17025 laboratories.**

Customer: Premier US Hemp
Address: 1224 S. Peninsula Dr #212
Daytona Beach, FL 32118
Sample ID: Premier body Topical Relief Balm
Matrix: Topical
Labnumber: 21D0010-02



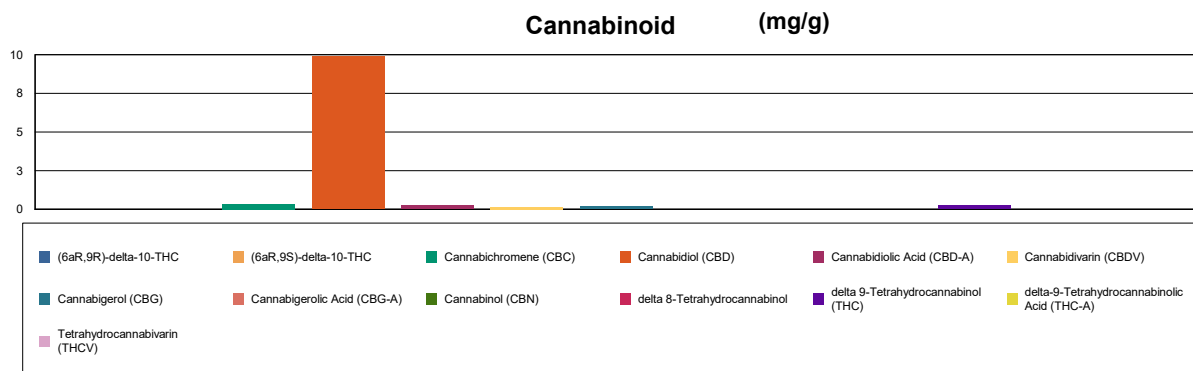
Cannabinoid Profile

Test Conditions: 18°C
Extraction Technician: SH
Analytical Chemist: CB

Extraction Date(s)	Analysis Date(s)
4/1/2021	4/1/2021

Cannabinoids (HPLC)		Results	
	LOD (mg/g)	%	mg/g
Cannabidiol (CBD)		0.02	0.172
Cannabidiol Acid (CBD-A)		0.03	0.258
Cannabigerol (CBG)		0.02	0.194
Cannabigerol Acid (CBG-A)	<0.080		
Cannabidiol (CBD)		0.99	9.88
Tetrahydrocannabinol (THC)	<0.080		
Cannabinol (CBN)	<0.080		
Cannabichromene (CBC)		0.03	0.338
delta 9-Tetrahydrocannabinol (THC)		0.02	0.248
delta-9-Tetrahydrocannabinolic Acid (THC-A)	<0.080		
delta 8-Tetrahydrocannabinol	<0.080		
(6aR,9S)-delta-10-THC	<0.080		
(6aR,9R)-delta-10-THC	<0.080		
Cannabinoids Total		%	mg/g
Max Active THC (delta-9-tetrahydrocannabinol)		0.02	0.25
Max Active CBD		1.01	10.11
T.Active Cannabinoids		1.07	10.70
Total Cannabinoids		1.11	11.10

Following USDA guidelines on uncertainty, Altitude Consulting's uncertainty is calculated to be +/- 2% for all cannabinoids using a coverage factor of 2 (95% confidence interval). Measurement uncertainty has not been factored into reported values.
Blank results indicate the compound was below the limit of detection.



Gary Brook - Laboratory Director - 4/2/2021

Reporting Limits will vary based on sample extraction weight used for the analysis.

The results of this report are based solely on the sample submitted and cannot be reproduced. Decision Rule: Measurement uncertainty is not accounted for in the reported values.

Results are based solely on calculated numbers. Altitude Consulting makes no Statements of conformity. **Pesticide, metal, and microbial analyses are subcontracted to ISO 17025 laboratories.**