



Customer: Premier US Hemp
Customer Sample ID: Topical Relief 0% THC
Laboratory Number: 19L0353-01



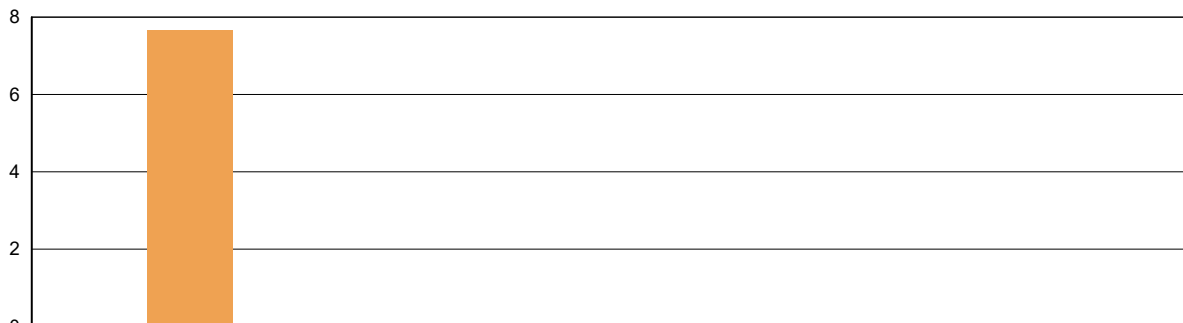
Cannabinoid Profile

Extraction Technician: DF
Analytical Chemist: MF

Extraction Date(s)	Analysis Date(s)
12/23/2019	12/23/2019

Cannabinoids (HPLC)		Results	
	LOD (mg/g)	%	mg/g
Cannabidivarin (CBDV)	<0.20		
Cannabidiolic Acid (CBD-A)	<0.20		
Cannabigerolic Acid (CBG-A)	<0.20		
Cannabigerol (CBG)	<0.20		
Cannabidiol (CBD)		0.77	7.66
Tetrahydrocannabivarin (THCV)	<0.20		
Cannabinol (CBN)	<0.20		
delta 9-Tetrahydrocannabinol (THC)	<0.20		
delta 8-Tetrahydrocannabidol	<0.20		
Cannabichromene (CBC)	<0.20		
delta-9-Tetrahydrocannabinolic Acid (THC-A)	<0.20		
Cannabinoids Total		%	mg/g
Max Active THC		0.00	0.00
Max Active CBD		0.77	7.66
T.Active Cannabinoids		0.77	7.66
Total Cannabinoids		0.77	7.66
Ratios			
NA:1 CBD to THC		0.00:1 THC to CBD	

Cannabinoid (mg/g)

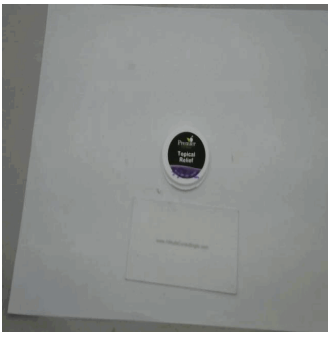


■ Cannabichromene (CBC)	■ Cannabidiol (CBD)	■ Cannabidiolic Acid (CBD-A)	■ Cannabidivarin (CBDV)	■ Cannabigerol (CBG)
■ Cannabigerolic Acid (CBG-A)	■ Cannabinol (CBN)	■ delta 8-Tetrahydrocannabidol	■ delta 9-Tetrahydrocannabinol (THC)	■ delta-9-Tetrahydrocannabinolic Acid (THC-A)
■ Tetrahydrocannabivarin (THCV)				

Altitude Consulting, LLC utilizes NIST traceable Reference Standards and Certified Reference Material to calibrate analytical instruments along with proven analytical methods. The methods are applied in the most ethical manner following good laboratory practice guidelines. The results of this report are based solely on the sample submitted and cannot be reproduced.



Customer: Premier US Hemp
Customer Sample ID: Topical Relief 0.3% THC
Laboratory Number: 19L0353-02



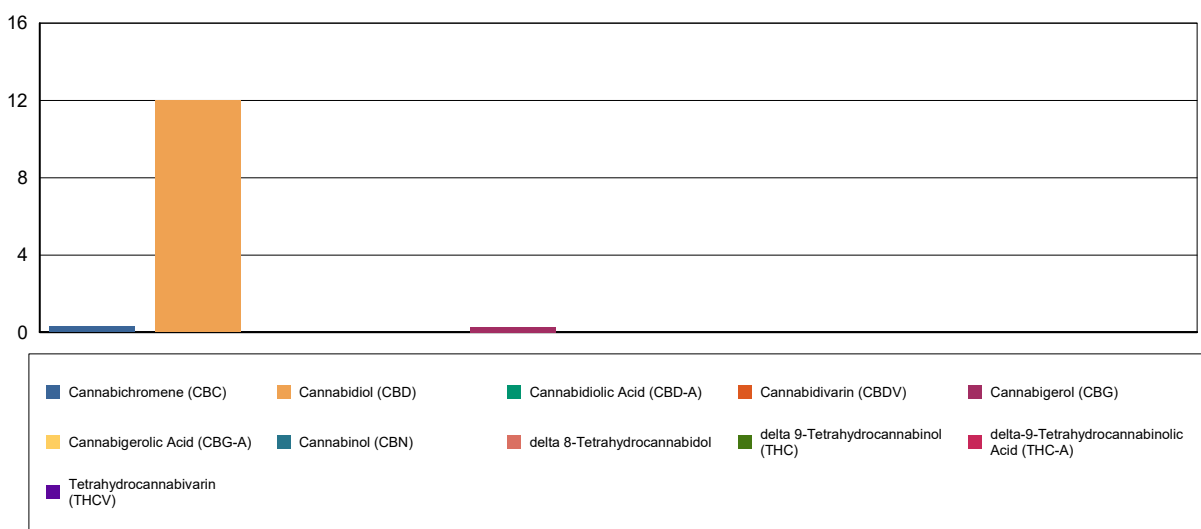
Cannabinoid Profile

Extraction Technician: DF
Analytical Chemist: MF

Extraction Date(s)	Analysis Date(s)
12/23/2019	12/23/2019

Cannabinoids (HPLC)		Results	
	LOD (mg/g)	%	mg/g
Cannabidivarin (CBDV)	<0.20		
Cannabidiolic Acid (CBD-A)	<0.20		
Cannabigerolic Acid (CBG-A)	<0.20		
Cannabigerol (CBG)		0.03	0.269
Cannabidiol (CBD)		1.20	12.0
Tetrahydrocannabivarin (THCV)	<0.20		
Cannabinol (CBN)	<0.20		
delta 9-Tetrahydrocannabinol (THC)	<0.20		
delta 8-Tetrahydrocannabidol	<0.20		
Cannabichromene (CBC)		0.03	0.313
delta-9-Tetrahydrocannabinolic Acid (THC-A)	<0.20		
Cannabinoids Total		%	mg/g
Max Active THC		0.00	0.00
Max Active CBD		1.20	12.00
T.Active Cannabinoids		1.26	12.60
Total Cannabinoids		1.26	12.60
Ratios			
NA:1 CBD to THC		0.00:1 THC to CBD	

Cannabinoid (mg/g)

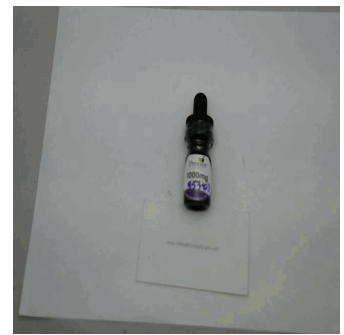


Altitude Consulting, LLC utilizes NIST traceable Reference Standards and Certified Reference Material to calibrate analytical instruments along with proven analytical methods. The methods are applied in the most ethical manner following good laboratory practice guidelines. The results of this report are based solely on the sample submitted and cannot be reproduced.



Customer: Premier US Hemp
Customer Sample ID: Tincture 0.3% THC
Laboratory Number: 19L0353-03

Density: 0.947



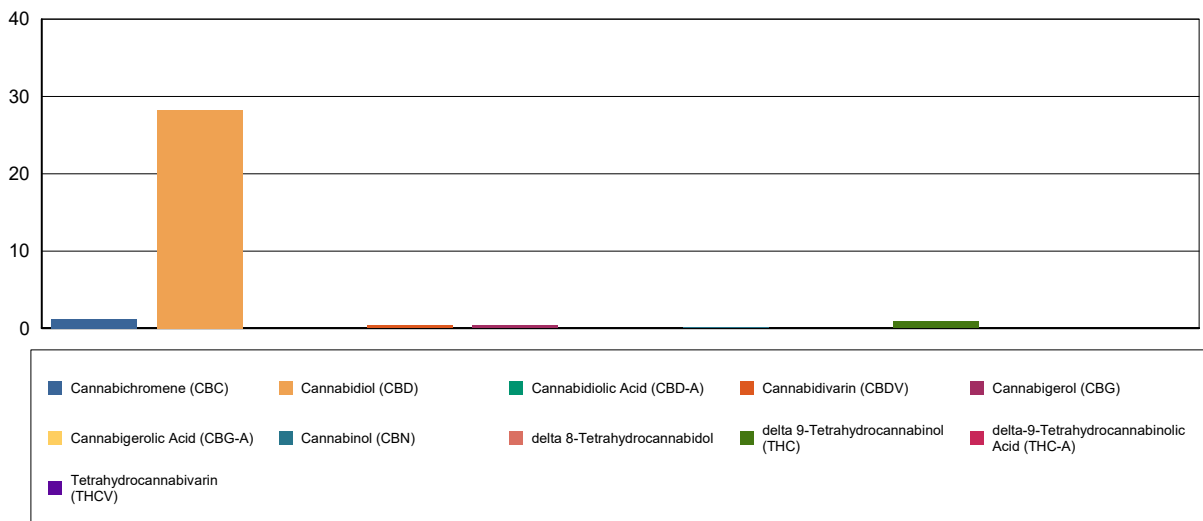
Cannabinoid Profile

Extraction Technician: DF
Analytical Chemist: MF

Extraction Date(s)	Analysis Date(s)
12/23/2019	12/23/2019

Cannabinoids (HPLC)		Results	
	LOD (mg/mL)	%	mg/mL
Cannabidiarin (CBDV)		0.03	0.344
Cannabidiolic Acid (CBD-A)	<0.090		
Cannabigerolic Acid (CBG-A)	<0.090		
Cannabigerol (CBG)		0.03	0.343
Cannabidiol (CBD)		2.83	28.3
Tetrahydrocannabivarin (THCV)	<0.090		
Cannabinol (CBN)		0.01	0.099
delta 9-Tetrahydrocannabinol (THC)		0.08	0.830
delta 8-Tetrahydrocannabidol	<0.090		
Cannabichromene (CBC)		0.12	1.21
delta-9-Tetrahydrocannabinolic Acid (THC-A)	<0.090		
Cannabinoids Total		%	mg/mL
Max Active THC		0.08	0.83
Max Active CBD		2.83	28.30
T.Active Cannabinoids		3.08	30.80
Total Cannabinoids		3.11	31.10
Ratios			
34.05:1 CBD to THC		0.03:1 THC to CBD	

Cannabinoid (mg/mL)

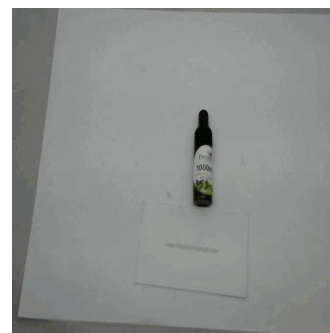


Altitude Consulting, LLC utilizes NIST traceable Reference Standards and Certified Reference Material to calibrate analytical instruments along with proven analytical methods. The methods are applied in the most ethical manner following good laboratory practice guidelines. The results of this report are based solely on the sample submitted and cannot be reproduced.



Customer: Premier US Hemp
Customer Sample ID: Tincture 0% THC
Laboratory Number: 19L0353-04

Density: 0.947



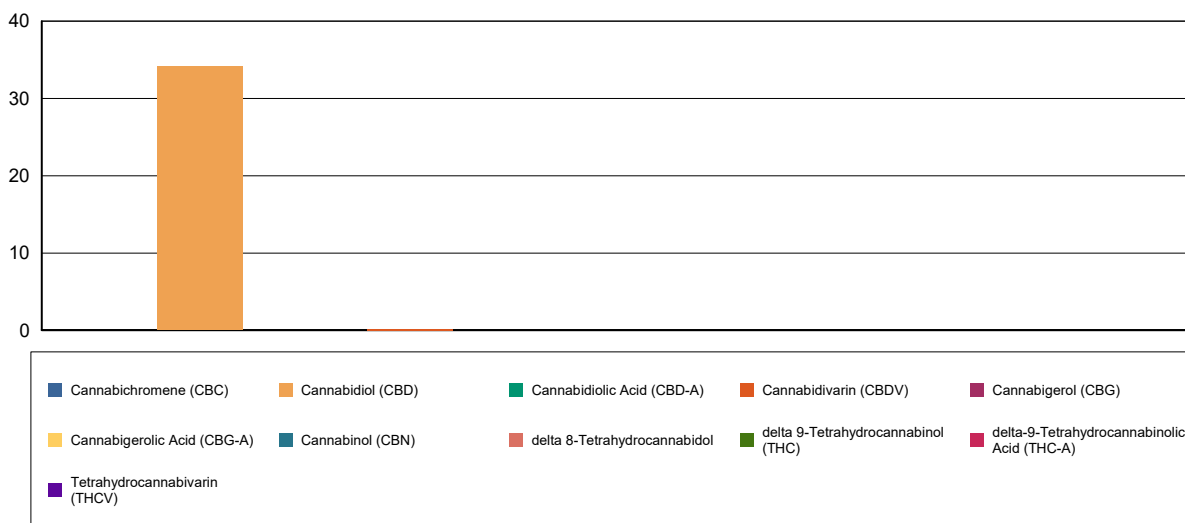
Cannabinoid Profile

Extraction Technician: DF
Analytical Chemist: MF

Extraction Date(s)	Analysis Date(s)
12/23/2019	12/23/2019

Cannabinoids (HPLC)		Results	
	LOD (mg/mL)	%	mg/mL
Cannabidivarin (CBDV)		0.02	0.176
Cannabidiolic Acid (CBD-A)	<0.090		
Cannabigerolic Acid (CBG-A)	<0.090		
Cannabigerol (CBG)	<0.090		
Cannabidiol (CBD)		3.42	34.2
Tetrahydrocannabivarin (THCV)	<0.090		
Cannabinol (CBN)	<0.090		
delta 9-Tetrahydrocannabinol (THC)	<0.090		
delta 8-Tetrahydrocannabidol	<0.090		
Cannabichromene (CBC)	<0.090		
delta-9-Tetrahydrocannabinolic Acid (THC-A)	<0.090		
Cannabinoids Total		%	mg/mL
Max Active THC		0.00	0.00
Max Active CBD		3.42	34.20
T.Active Cannabinoids		3.42	34.20
Total Cannabinoids		3.43	34.30
Ratios			
NA:1 CBD to THC		0.00:1 THC to CBD	

Cannabinoid (mg/mL)



Altitude Consulting, LLC utilizes NIST traceable Reference Standards and Certified Reference Material to calibrate analytical instruments along with proven analytical methods. The methods are applied in the most ethical manner following good laboratory practice guidelines. The results of this report are based solely on the sample submitted and cannot be reproduced.