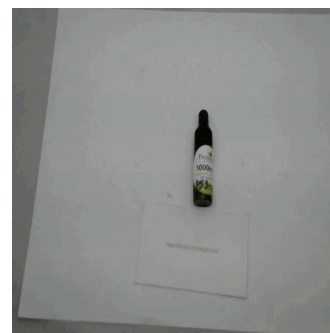




**Customer:** Premier US Hemp  
**Customer Sample ID:** Tincture 0% THC  
**Laboratory Number:** 19L0353-04  
  
**Density:** 0.947



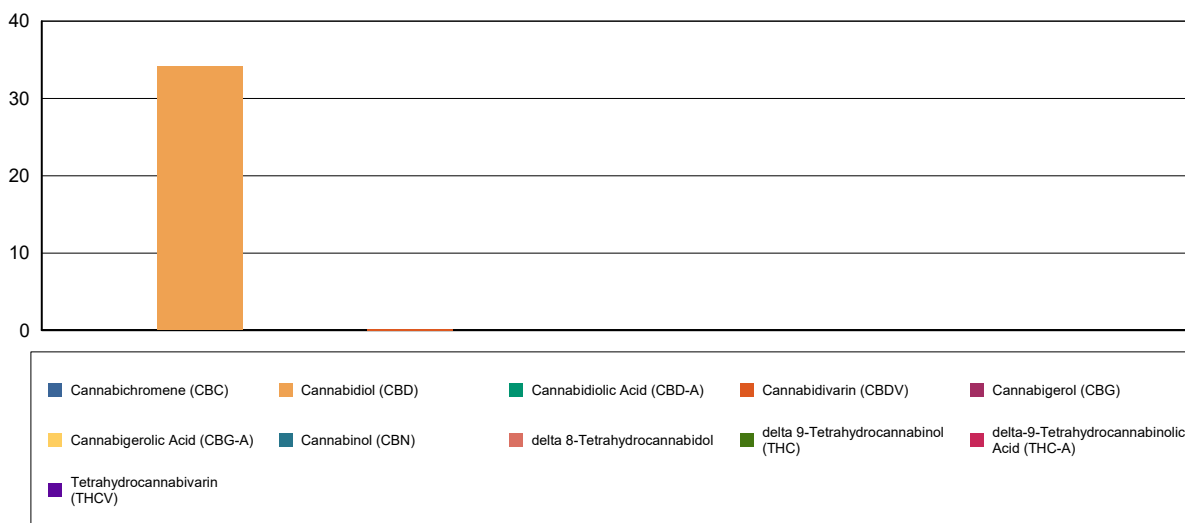
## Cannabinoid Profile

**Extraction Technician:** DF  
**Analytical Chemist:** MF

Extraction Date(s)	Analysis Date(s)
12/23/2019	12/23/2019

Cannabinoids (HPLC)		Results	
	LOD (mg/mL)	%	mg/mL
Cannabidivarin (CBDV)		0.02	0.176
Cannabidiolic Acid (CBD-A)	<0.090		
Cannabigerolic Acid (CBG-A)	<0.090		
Cannabigerol (CBG)	<0.090		
Cannabidiol (CBD)		3.42	34.2
Tetrahydrocannabivarin (THCV)	<0.090		
Cannabinol (CBN)	<0.090		
delta 9-Tetrahydrocannabinol (THC)	<0.090		
delta 8-Tetrahydrocannabidol	<0.090		
Cannabichromene (CBC)	<0.090		
delta-9-Tetrahydrocannabinolic Acid (THC-A)	<0.090		
Cannabinoids Total		%	mg/mL
Max Active THC		0.00	0.00
Max Active CBD		3.42	34.20
T.Active Cannabinoids		3.42	34.20
Total Cannabinoids		3.43	34.30
Ratios			
NA:1 CBD to THC		0.00:1 THC to CBD	

### Cannabinoid (mg/mL)



Altitude Consulting, LLC utilizes NIST traceable Reference Standards and Certified Reference Material to calibrate analytical instruments along with proven analytical methods. The methods are applied in the most ethical manner following good laboratory practice guidelines. The results of this report are based solely on the sample submitted and cannot be reproduced.